

An abstract graphic consisting of several horizontal and vertical brushstrokes in various shades of grey and black, set against a dark teal background. The strokes are layered and textured, creating a sense of movement and depth.

ACUSTICO 12

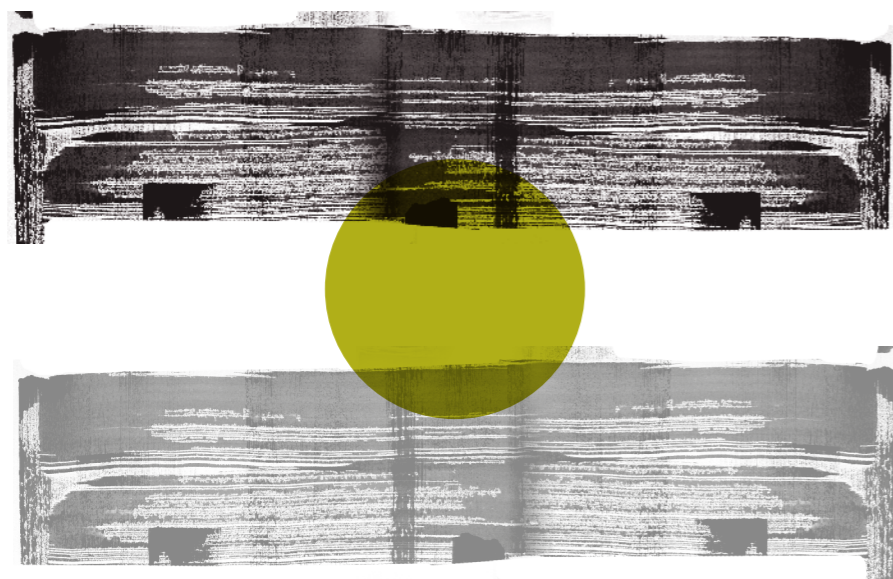
viva
MADE

12

il suono della terracotta,
colori **polverosi**

The sound of terracotta, dusty colours.
Le chant de la terre cuite, des couleurs poudrées.
Der Klang von Terrakotta, staubige Farben.
El sonido de la terracota, colores pulverulentos.
Звук терракоты, пыльные цвета.

(punti di vista)



point of view

idee in
movimento

Ever-developing ideas

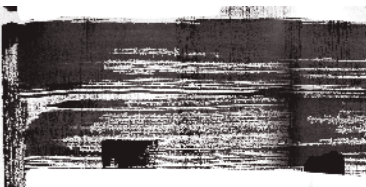
12



COTTO NAT. RETT.
60x120 - 23⁵/₈"x47¹/₄"

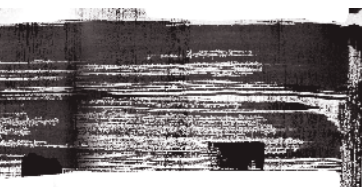


COTTO NAT. RETT.
60x120 - 23^{5/8}"x47^{1/4}"



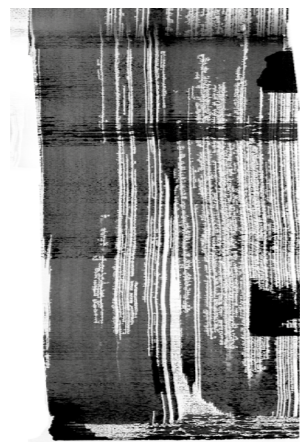
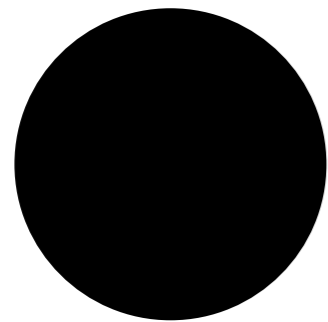
WHITE NAT. RETT.
60x120 - 23⁵/₈"x47¹/₄"



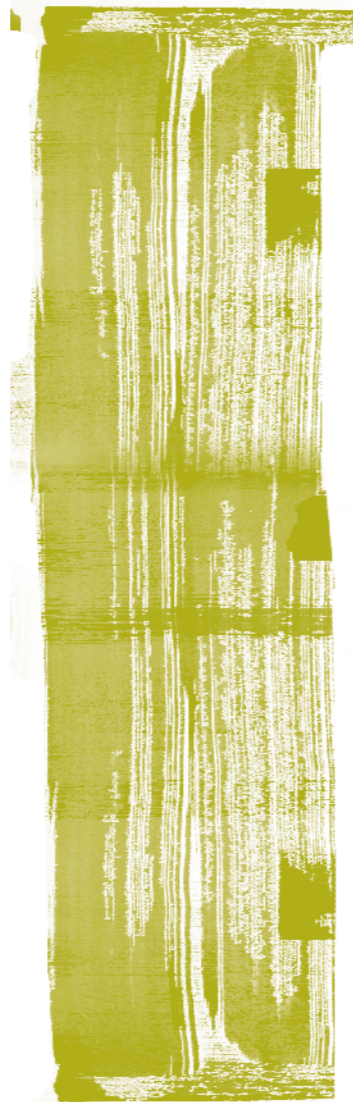


GREY NAT. RETT.
60x60 - 23⁵/₈"x23⁵/₈"





(evoluzione)



evolution

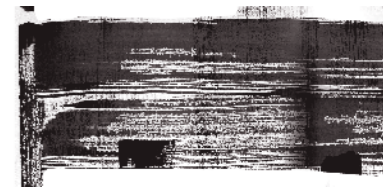
12

le dimensioni si **espandono**
per rispondere
al contemporaneo

Sizes expand, reflecting contemporary tastes



GREY NAT. RETT.
60x60 - 23⁵/₈"x23⁵/₈"





GREY NAT. RETT.
60x120 - 23^{5/8}"x47^{1/4}"



solutions

Evolution and style

evoluzione e
stile





WHITE NAT. RETT.
60x120 - 23⁵/₈"x47¹/₄"

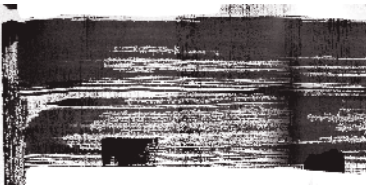


GREY NAT. RETT.
30x120 - 11^{13/16}"x47^{1/4}"





SAND NAT. RETT.
60x60 - 23^{5/8}"x23^{5/8}"

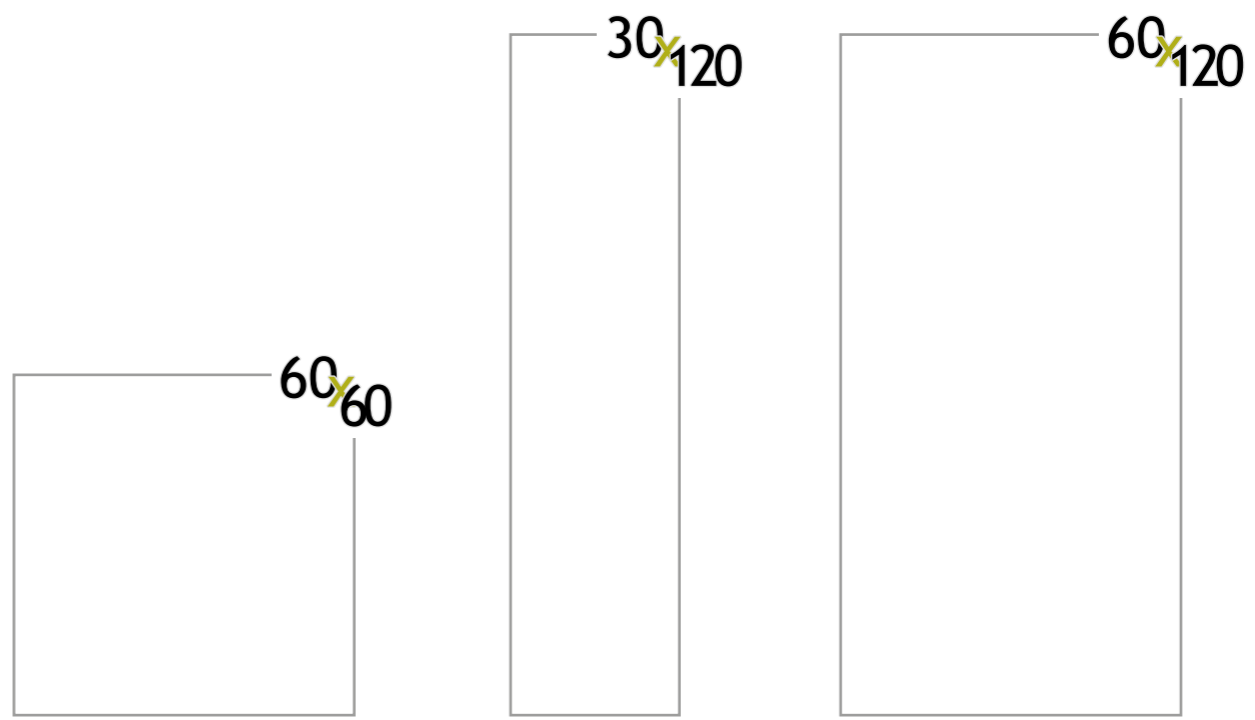




forme ampie e armonia

Ample dimensions and harmony

differences / analogies



colori/formati

WHITE



60x120 - 23^{5/8}"x47^{1/4}"
E7CP White Nat. Rett.

● T31



60x60 - 23^{5/8}"x23^{5/8}"
E22P White Nat. Rett.

● T17



30x120 - 11^{13/16}"x47^{1/4}"
E22J White Nat. Rett.

● T63

COTTO



60x120 - 23^{5/8}"x47^{1/4}"
E7CQ Cotto Nat. Rett.

● T31



60x60 - 23^{5/8}"x23^{5/8}"
E22Q Cotto Nat. Rett.

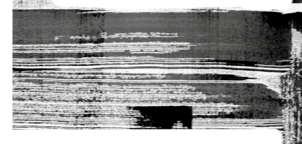
● T17



30x120 - 11^{13/16}"x47^{1/4}"
E22K Cotto Nat. Rett.

● T63

Si consiglia la posa con fuga 2 mm. - Laying with a 2 mm-joint is recommended. - Pose recommandée avec joints de 2 mm.
Es wird eine Fugenbreite von 2 mm empfohlen. - Se recomienda la colocación con juntas de 2 mm. - Рекоменгується укладка с швом 2 мм.
Verificare l'abbinamento dei toni tra i formati differenti. - Check the colour matching between different sizes.
Vérifier l'assortiment des tonalités entre les différents formats. - Die Kombination der Farbtöne unter den verschiedenen Formaten prüfen.
Comprobar la combinación de los tonos entre los distintos formatos. - Проверьте сочетание тонов у разных форматов.



colori/formati

SAND



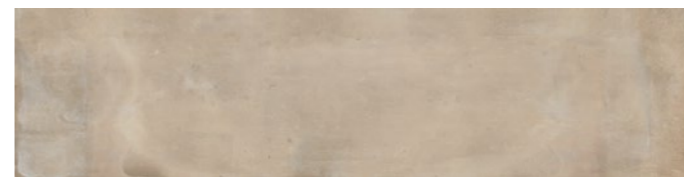
60x120 - 23^{5/8}"x47^{1/4}"
E7CR Sand Nat. Rett.

● T31



60x60 - 23^{5/8}"x23^{5/8}"
E22R Sand Nat. Rett.

● T17



30x120 - 11^{13/16}"x47^{1/4}"
E22L Sand Nat. Rett.

● T63

GREY



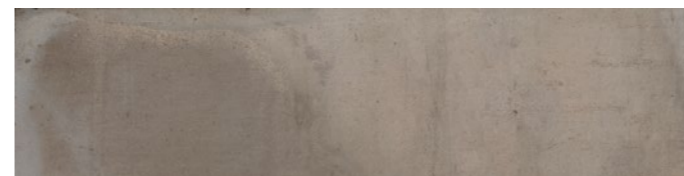
60x120 - 23^{5/8}"x47^{1/4}"
E7CT Grey Nat. Rett.

● T31



60x60 - 23^{5/8}"x23^{5/8}"
E22T Grey Nat. Rett.

● T17



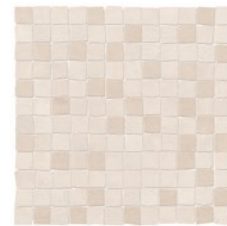
30x120 - 11^{13/16}"x47^{1/4}"
E22N Grey Nat. Rett.

● T63

Si consiglia la posa con fuga 2 mm. - Laying with a 2 mm-joint is recommended. - Pose recommandée avec joints de 2 mm.
Es wird eine Fugenbreite von 2 mm empfohlen. - Se recomienda la colocación con juntas de 2 mm. - Рекоменгується укладка с швом 2 мм.
Verificare l'abbinamento dei toni tra i formati differenti. - Check the colour matching between different sizes.
Vérifier l'assortiment des tonalités entre les différents formats. - Die Kombination der Farbtöne unter den verschiedenen Formaten prüfen.
Comprobar la combinación de los tonos entre los distintos formatos. - Проверьте сочетание тонов у разных форматов.

decors - decors - dekore - decorados - декоры
decori

MOSAICO* TESSERA/CHIP 2,3x2,3 (7/8" x 7/8")



30x30 - 11¹³/₁₆" x 11¹³/₁₆"
E25E White Nat. ● A108



30x30 - 11¹³/₁₆" x 11¹³/₁₆"
E25G Sand Nat. ● A108



30x30 - 11¹³/₁₆" x 11¹³/₁₆"
E25F Cotto Nat. ● A108



30x30 - 11¹³/₁₆" x 11¹³/₁₆"
E25J Grey Nat. ● A108

* Su rete in fibra - On fibre mesh backing - Sur filet en fibre de verre - Auf Glasfasernetz - Sobre malla de fibra - На волоконной сетке

trims - pieces speciales - formteile - piezas especiales - специальные изделия
pezzi speciali

| | Dimensione Size | | | | | Fascia di prezzo Price band |
|--|--|------------|------------|------------|------------|-----------------------------------|
| Battiscopa - Skirting | Nat. Rett. 7x60 - 2 ³ / ₄ "x23 ⁵ / ₈ " Pcs. Box. 15 - LM x Box 9,00 | E28P | E28R | E28Q | E28T | ● A11 |
| Battiscopa Scala Tread Skirting | Nat. Rett. 7x60x60 2 ³ / ₄ "x23 ⁵ / ₈ " x23 ⁵ / ₈ " Pcs. Box 2 - LM x Box 1,20 | DX E93M | DX - | DX E93P | DX E93R | ● A33 |
| | | SX E93N | SX - | SX E93Q | SX E93S | |
| Battiscopa Scala Dx Sx Tread Skirting Dx Sx | Nat. Rett. 7x60x60 2 ³ / ₄ "x23 ⁵ / ₈ " x23 ⁵ / ₈ " Pcs. Box 2 - LM x Box 1,20 | DX E2VX | DX - | DX E940 | DX E942 | ● A33 |
| | | SX E93Z | SX - | SX E941 | SX E943 | |
| Gradone - Step | Nat. Rett. 33x120x3,2x3,2 12 ¹⁵ / ₁₆ "x47 ¹ / ₄ "x1 ¹ / ₄ " x1 ¹ / ₄ " Pcs. Box 2 - LM x Box 2,40 | E8E2 | E8E4 | E8E3 | E8E6 | ● A98 |
| Angolare Dx Sx Corner Tile Dx Sx | Nat. Rett. 33x120x3,2x3,2 12 ¹⁵ / ₁₆ "x47 ¹ / ₄ "x1 ¹ / ₄ " x1 ¹ / ₄ " Pcs. Box 1 - LM x Box 1,20 | DX E8DQ | DX E8DT | DX E8DR | DX E8DX | ● A104 |
| | | SX E28D | SX E8DU | SX E8DS | SX E8DY | |
| Angolare - Corner Tile | Nat. Rett. 33x33x3,2x3,2 12 ¹⁵ / ₁₆ "x12 ¹⁵ / ₁₆ "x1 ¹ / ₄ " x1 ¹ / ₄ " Pcs. Box 2 - LM x Box 0,66 | E8E7 | E8E9 | E8E8 | E8EC | ● A72 |

ACUSTICO 12

Dry - Pressed Ceramic Tiles ISO 13006 Annex G - UNI EN 14411 Annex G - Bla GL

CARATTERISTICHE TECNICHE

Technical Features - Caracteristiques Techniques - Technische Eigenschaften
Technische Eigenschaften - Caracteristicas Tecnicas - Технические Характеристики

| | NORMA Standard - Norme Norm - Norma - Норма | VALORI Value - Valeur Vorgabe - Valor - Средние |
|--|--|--|
| ASSORBIMENTO D'ACQUA (VALORE MEDIO IN %) Water absorption (Average value expressed in %) - Absorption d'eau (Valeur moyenne en %) Wasseraufnahme (Durchschnittswert in %) - Absorción de agua (Valor medio en %) - Поглощение воды | UNI EN ISO 10545/3 ASTM C373 | CONFORME COMPLIANT |
| RESISTENZA ALLA FLESSIONE Modulus of rupture - Resistance a la flexion - Biegefestigkeit Resistencia a la flexion - Прочность на изгиб | SPESSORE UNI EN ISO 10545/4 | 9,5 mm ≥ 45 N/mm ² |
| FORZA DI ROTTURA Breaking strength - Résistance à la rupture - Bruchlast - Resistencia a la rotura - Разрывное усилие | UNI EN ISO 10545/4 ASTM C648 | ≥ 2000 N 400 Lbs |
| RESISTENZA AL GELO Frost resistance - Résistance au gel - Frostbeständigkeit Resistencia a las heladas - Морозостойкость | UNI EN ISO 10545/12 ASTM C1026 | CONFORME UNAFFECTED |
| RESISTENZA CHIMICA AD ALTE E BASSE CONCENTRAZIONI DI ACIDI E BASI Chemical resistance to high and low acid and basic concentrations Résistance chimique aux hautes et basses concentrations d'acides et de bases Chemikalienfestigkeit bei hohen und niedrigen Konzentrationen von Säuren und Basen Resistencia química con concentraciones altas y bajas de ácidos y bases Химическая стойкость к высоким и низким концентрациям кислот и щелочей | UNI EN ISO 10545/13 ASTM C-650 | A - LA - HA UNAFFECTED |
| RESISTENZA ALLE MACCHIE Stain resistance - Résistance aux taches - Fleckenbeständigkeit Resistencia a las manchas - Стойкость к образованию пятен | UNI EN ISO 10545/14 | 5 |
| COEFFICIENTE DI ATTRITO Slip resistance Coefficient de glissement Rutschfestigkeit Barfußbereich Coeficiente de atrito medio Коэффициент трения | DIN EN 16165 Annex B | R10 |
| | DIN EN 16165 Annex A | B (A+B) |
| | ANSI A326.3:2017 DCOF | WET ≥ 0,50 |
| | B.C.R.A. D.M. N. 236 14/6/89 | ≥ 0,40 |
| | AS 4586-2013 Anexo A | P2 |
| | BS 7976-2: 2002 BSEN13036-4:2011 Pendulum testers | < 36 Moderate Slip potential |
| | UNE 41901:2017 EX DB SUA (actual) | 2 |

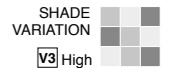
Per maggiori chiarimenti sui dati tecnici e sulla garanzia consultare il catalogo generale in vigore. - For further information on technical specifications, please consult our up-dated general catalogue. - Pour toutes informations supplémentaires sur les données techniques et sur les garanties, veuillez consulter le catalogue general en vigueur. - Für weitere Informationen über technische Daten und Garantie beziehen sie sich bitte auf den aktuellen Gesamtkatalog. - Para ultteriores informaciones sobre los datos tecnicos y la garantia, vease el catalogo general en vigor. - Более подробную информацию о технических данных и гарантии смотрите в действующем сводном катал.



PRODUCT CERTIFIED FOR LOW CHEMICAL EMISSIONS: UL COM/CGG UL 2818



放射性水平A类



* La lista completa e aggiornata dei prodotti certificati è visionabile sul sito www.cstb.fr. Per qualsiasi ulteriore informazione contattare Emilceramica Group. - The full, up-to-date list of certified products can be viewed at www.cstb.fr. Please contact the Emilceramica Group for any further information. - La liste complète et à jour des produits certifiés peut être consultée sur le site www.cstb.fr. Pour tout renseignement complémentaire, veuillez contacter Emilceramica Group. - Die komplette und aktualisierte Liste der zertifizierten Produkte ist im Internet auf www.cstb.fr einsehbar. Für ausführliche Informationen kontaktieren Sie bitte die Emilceramica Group. - La lista completa y actualizada de los productos certificados se puede consultar accediendo al sitio web www.cstb.fr. Para más información pueden ponerse en contacto con Emilceramica Group.

| Formato Size Format Format Tamaño Формат cm | Spessore Thickness Épaisseur Stärke Espesor Толщина mm | Pz. x Mq. Pieces x Sqm Pcs / M ² Stk. x Qm Pzs x Mc. Шт x Кв.М. | Pz. x Scat. Pieces x Box Pcs / Bte Stk. x Krt. Pzs x Caja Шт x Кор. | Mq. x Scat. Sqm x Box M ² / Bte Qm x Krt. Mc. x Caja Кв.М. x Кор. | Peso x Scat. Weight x Box Poids / Bte Gewicht x Krt. Peso x Caja Вес x Кор. Kg | Scat. x Pal. Boxes x Pal. Bte / Pal. Krt. x Pal. Cajas x Pal. Кор. x Подд. | Mq. x Pal. Sqm x Pal. M ² / Pal. Qm x Pal. Mc. x Pal. Кв.М. x Подд. | Peso x Pal. Weight x Pal. Poids / Pal. Gewicht x Pal. Peso x Pal. Вес x Подд. Kg |
|---|--|---|--|---|--|---|---|--|
| 60x120 Naturale | 9,5 | 1,39 | 2 | 1,440 | 31,68 | 36 | 51,84 | 1140 |
| 30x120 Naturale | 9,5 | 2,78 | 3 | 1,080 | 23,76 | 48 | 51,84 | 1140 |
| 60x60 Naturale | 9,5 | 2,78 | 3 | 1,080 | 23,76 | 40 | 43,20 | 950 |
| 30x30 Mosaico Naturale | 9,5 | 11,11 | 5 | 0,450 | 8,73 | 60 | 27,00 | 524 |





| | |
|--|--|
| Viva is a brand of Emilceramica S.r.l. a socio unico | Sede Commerciale/ Amministrativa |
| emilgroup.it/viva emilgroup.it | Via Ghiarola Nuova, 29 - 41042 Fiorano Modenese (Mo) Italy T +39 0536 835111 - info@emilceramicagroup.it |